

What is the Better Predictor for Performance on the ABOG Written Exam: USMLE Exam vs. CREOG In-Training Examination Scores



BRUSTMAN L, WILLIAMS F, CARROLL K, DELI B, FRANCIS M, LANGER O
 St. Luke's-Roosevelt Hospital Center, New York, NY

Objective

To identify whether or not the Council on Resident Education in Obstetrics and Gynecology (CREOG) in-training examination score in the final year of residency (PGY4) is a better predictor than the United States Medical Licensure Exam (USMLE Step 1 and Step 2) scores of successful performance on the American Board of Obstetrics and Gynecology (ABOG) written exam.

Methods

— The academic data of 42 residents who completed an OB/GYN residency program between the years of 2002-2008 were reviewed

— USMLE scores on Step 1 and Step 2 (reflecting medical school academic performance) and CREOG exam scores in the 4th year of residency (reflecting knowledge acquired in residency) were evaluated in relationship to their passing or failing the ABOG written exam (1st time takers)

— For analysis, scores were stratified:
 (a) USMLE Step 1 and Step 2
 Group 1: < 226
 Group 2: ≥ 226
 (b) CREOG Exam Scores (Overall)
 Group 1: ≤ 200
 Group 2: ≥ 201

Results

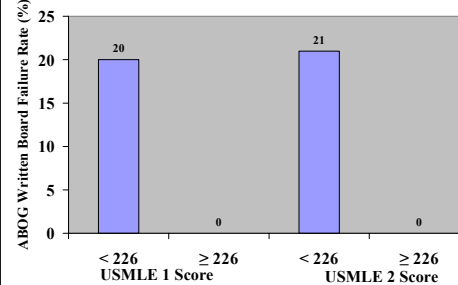
Descriptive Statistics of Testing Methods

	Mean ± SD	95% C.I.	Range
USMLE 1	208 ± 11	204-212	182-225
USMLE 1	237 ± 11	227-248	227-251
USMLE 2	206 ± 11	200-212	183-221
USMLE 2	234 ± 8	227-240	226-245
CREOG Group 1	189 ± 10	184-193	175-197
CREOG Group 2	213 ± 10	209-221	201-233

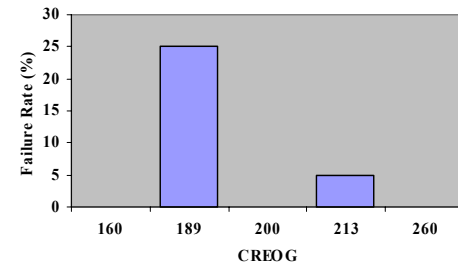
Association Between USMLE Scores (1 and 2) and PGY4 CREOG Scores

	PGY4 CREOG	USMLE 1	USMLE 2
USMLE 1	r = 0.58	—	
	p = 0.001		
USMLE 2	r = 0.75	r = 0.50	
	p = 0.003	p = 0.002	

Association of Scores on USMLE (1&2) and ABOG Written Board Failure Rate



Association of CREOG Scores in the PGY4 Year and ABOG Written Exam Failure Rate



Summary

- Mean PGY4 CREOG exam scores was 192 ± 18
 Mean USMLE Step 1 scores was 213 ± 15
- CREOG exam scores ≥ 201 had a pass rate of 95% on written Board exam. Score of ≤ 201 was associated with a 75% pass rate, therefore a 25% failure rate.
- Residents who had USMLE scores of ≥ 226 all passed the written ABOG exam
- Residents who had USMLE scores of < 226 were associated with a 20% and 21% failure rate, respectively.
- USMLE Step 1 and 2 scores correlate to PGY4 CREOG exam scores.

Conclusions

Our data suggests that USMLE scores (Step 1 and Step 2) and the CREOG exam scores in the PGY4 year are predictors of success on the ABOG written exam.